

# The Glenfern

The Official Newsletter of The Friends of Glenfern Valley Bushlands Inc.  
Edition No. 35 Spring 2014

## President's Report

Welcome to another busy Spring and Summer in your local bushlands. We have been working away quietly over Autumn and Winter; our monthly bushland restoration sessions have been well attended and super productive. We have had many new faces come to join in with our team, and some familiar faces returned for a visit. Everyone is most welcome, so please join in as often as you make it.

Our web page has a new webmaster. Daniel Jackson has now taken on the website and we look forward to contributions from members so Daniel can add new material to our comprehensive webpage. We would like to thank Clive Vernon for supporting the website for the past couple of years. Clive has done a grand job and deserves a break. Our webpage is a magic pudding of information of past and present activities. The webpage is the brilliant point of call to find out what is happening and to capture and reflect on our "corporate" memory.

In our last newsletter we set our plans to build a new frog pond for the reserve and over the last few months it has all happened. The construction got under way on the Anzac Weekend. We are indebted to Robert Fullagar for his invaluable assistance to our pond project by providing and operating his excavating equipment to get the heavy work done. A dedicated group of volunteers have added landscaping and plants. It has been a wonderful success already with frog breeding already in progress. We would

like to acknowledge the support of Ward funding from Cr Noel Cliff.

The vexed question of dog walking etiquette is with us again. Yarra Ranges Council has installed additional signage clearly stating that all dogs must be on a leash at all times. This has always been the case at Glenfern. Council rangers have been patrolling. It is essential for all pooches to be on a lead for the sake of our wildlife and the safety and comfort of visitors and dogs alike.

We have recently begun a new mid-week activity. The mid-week Conservation and Conversation sessions are on the first Wednesday of the month and are from 9 am to 11 am. Not too long and not too strenuous—but a chance to

participate in our projects and have a cuppa and a chat. If you get a chance come along.

It is a delight to announce a new activity for the group that will be of particular interest to those that are fascinated by the insect world. We are setting out to document the variety of butterflies which live in the reserve and to produce charts and documentation that will help members and visitors identify and learn about these colourful creatures. You will no doubt see more on this project in later newsletters and on our website and Facebook.

*Glenfern Valley Bushlands—a great place to visit and a great place to volunteer.*

**David Moncrieff**



The frog pond is taking shape



friends of Glenfern Valley Bushlands Inc.

# Weed works at the Archery Club



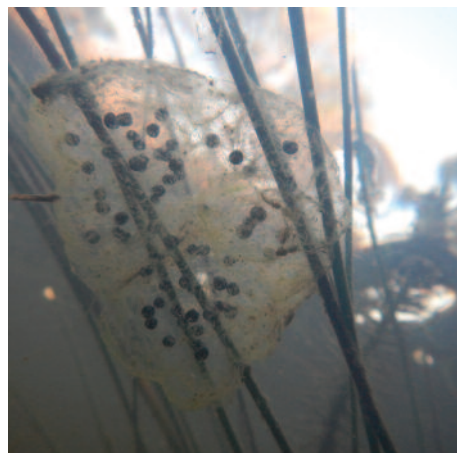
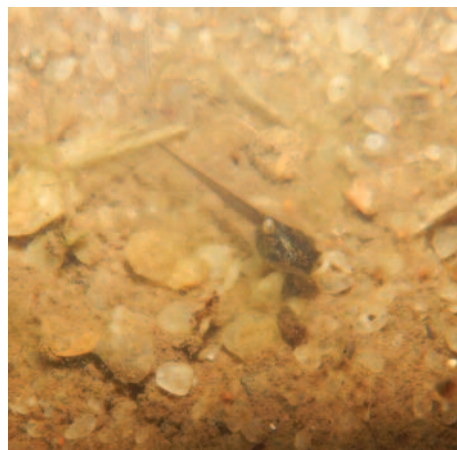
Over the past eleven or so years, the Friends have systematically removed (or employed contractors to remove) countless weeds from the Reserve. The results speak for themselves with fantastic regeneration and improved quality of vegetation. Glenfern is surrounded by pasture and housing, with Ferny Creek flowing past. In addition, Sherbrooke Archers beautiful property appears take a bite from Glenfern's northern boundary beside New Road. All our neighbours and the Creek are potential sources of re-infection by wind, water or animals (including birds of course). We were delighted therefore, to hear of Melbourne Water's proposal to carry out a significant weed removal program over the next four years.

Target species include Pittosporum, Blackberry, Boneseed, Cape Ivy, Broom and Creeping Buttercup. This will markedly reduce The Archery Club as an infection source and will transform the look and feel of their setting to be more natural and in keeping with the local area.

Safety is paramount, so the boundary fence has now been formalised with wire and warning signs facing the Reserve. In due course, we will plant a buffer of shrubs along that boundary to form a natural barrier.

We're grateful to Melbourne Water for their initiative and to the Sherbrooke Archers for their co-operation in what must be a disruptive process. In our view it will be a win-win-win for our three organisations.

# Frog Pond Hops Away



Our frog pond is up and working. With much help from Robert Fullagar and his machine and a trusty band of volunteers, the pond is now established and is already a breeding environment for local frogs including the Common Froglet and the Brown Tree Frog. As we get the chance we will add to the vegetation to create a more fitting habitat both within the pond and in the surrounding area.

The photos, taken in July, are of frog spawn and a tiny newly hatched tadpole.

*Pond photos by  
Douglas Moncrieff.*

# A Sad Ending for our Koala Sightings



From time to time we see koalas in our reserve, usually it's fleeting and that is it for a couple of years. Our most recent koala sightings were of a lone koala, thought to be female over May, June and July. The koala was usually spotted in one of half a dozen favoured long leaf box trees. This much cherished koala gave visitors a treasured opportunity to observe our rare fauna in the wild. She was affectionately known as Mrs K. Sadly the koala died in mid July. We did not establish the cause of death, but there were no apparent physical injuries.

*Mrs K  
Your stay was too short  
Our expectations too many  
May you rest in peace  
By the stream amongst the trees*



friends of Glenfern Valley Bushlands Inc.



# Clearing Ground Weeds

Spring is here! And the weeds are taking off. Here are some hints for dealing with common garden weeds:

## Asparagus fern

Can be controlled by pulling the fronds, but to eliminate the plant, it has to be dug out. Loosen the dirt all around the fern with a hand fork then work your fingers underneath to find the node that the fronds spring from. Gently pull out, bringing as many roots out as possible. Be warned – there is often as much underground as above.

## Buttercup (*Ranunculus*)

This also grows from an underground node, so use the hand fork to gently prise the whole plant up. Collect all the runners as well, to prevent the plant from resetting.

## Ivy

Ivy vines often grow underneath leaf litter, so look for the leaves poking up. Follow these down to the stem then pull along close to the ground. Ivy is best cleared in cold weather, as the sap can give some people a painful rash.

## Persistence is the key

It may take two or three seasons to clear these weeds, but once gone, it only takes an occasional check to keep them out.



## WHITE EARED HONEYEATER

*White-eared  
Honeyeater  
(Lichenostomus  
leucotis)*

This time of year this honeyeater definitely deserves to be showcased. With spring making its mark on the reserve, these birds are dominating the airspace. The males are very obvious, positioning themselves as high as possible, favouring a dead branch of a blackwood or wattle. These vantage points are excellent launch pads and a place to audition their melodious chorus.



friends of Glenfern Valley Bushlands Inc.

# The Glenfern

## WORKING BEE DIARY 2014

✱ Sunday 19th October  
**DISCOVERY DAY** Don't miss the fun.

✱ Saturday 15th November  
Area 7  
—Follow up Caring for Country Grant  
—Expand grassy patches.

✱ Saturday 6th December  
**CHRISTMAS TWILIGHT PICNIC**  
from 6pm at Glenfern Valley  
Bushlands Reserve. **BYO Everything.**

9:30 a.m.–12:30 p.m. (Morning Tea 11-ish)  
Central car park, Glenfern Road, Upwey  
Melway Map 74 G10

---

**NEW MID WEEK INITIATIVE**  
**CONSERVATION AND CONVERSATION**  
First Wednesday of the month 9–11 a.m.

---

Working bees are held every 3rd alternating Saturday or Sunday morning of the month.

Members, Committee and interested supporters meet on-site to take part in weeding, planting and talks about indigenous plants, animals and weed ID.

Everyone is welcome.

Entry for cars is via the Central gate on Glenfern Road Upwey (about ½ way along the reserve)

Site reference: Melways 74 G10.

Bring a water bottle and depending on the weather, a hat or wet weather gear. Please wear long pants and sensible shoes/boots.

In the event of a Fire Ban or inclement weather the working bee will be cancelled.

By being a financial member of Friends of Glenfern Valley Bushlands, you enable the group to gain valuable Funding Grants to help us with works in the reserve.

If you would like to become a financial member, please download the membership form from our website at:  
[www.glenfernvalleybushlands.org.au](http://www.glenfernvalleybushlands.org.au)

Membership is only: \$5 Concession, \$10 Individual, \$15 Family or \$50 for a business sponsor.

## ANNUAL GENERAL MEETING and MEMBER'S SOCIAL NIGHT

Thursday 9th October 7.00pm  
Upwey Township Hall  
(next to Scout hall, opposite the skate park)

Come and hear the story of  
Glenfern Valley Bushlands  
**"From rubbish dump  
to bush haven"**

### Corporate Sponsors:

#### UniPrint Pty Ltd

13 Edinburgh Street, Oakleigh South 3167

Printer of this newsletter

Call 9543 7677 for all your printing needs.

#### Native Vegetation Management

Armin Korchan Ph 59683297

Or: [armin@weedsmart.com.au](mailto:armin@weedsmart.com.au)

*Photos by: Mike Sverns, David and Douglas Monerietff,  
Linda Fullagar.*



Visit our Facebook page for up-to-date  
information and befriend us!

**We are troubled by the amount  
of rubbish being dumped on the  
perimeter of the reserve recently.**

**PLEASE** report rubbish dumping to:  
Shire of Yarra Ranges  
**Ph: 1300 368 333**

Friends of Glenfern Valley Bushlands Inc.

- P.O. Box 1283, Upwey Victoria 3158
- [glenfernvalleybushlands@hotmail.com](mailto:glenfernvalleybushlands@hotmail.com)
- [www.glenfernvalleybushlands.org.au](http://www.glenfernvalleybushlands.org.au)



friends of Glenfern Valley Bushlands Inc.